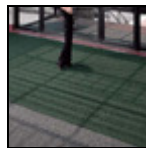
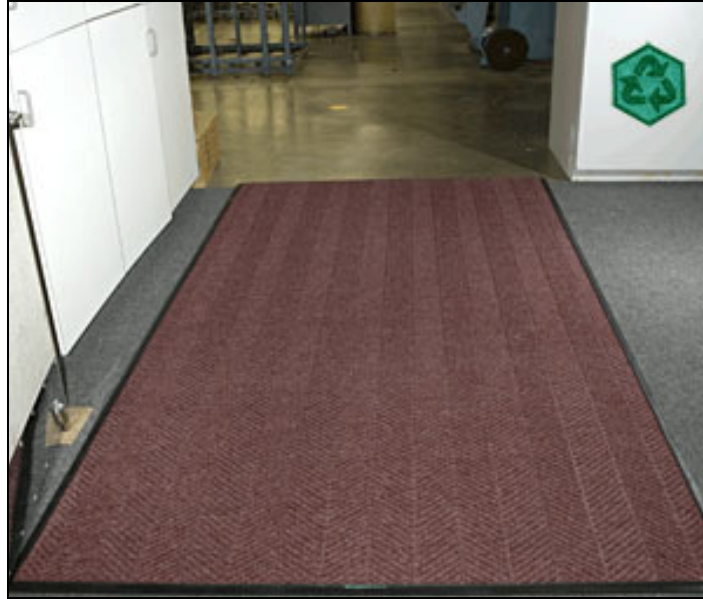


AMERICAN FLOOR MATS walk well

152 Rollins Avenue #102
Rockville, MD 20852
800-762-9010
240-780-3309 (f)
<http://www.americanfloormats.com>

Waterhog ECO Premier Roll Mats



Waterhog Premier Rolls Mats offer a herringbone design, which is extremely aggressive in scraping shoes clean of all grit, grime and water. The surface of these Waterhog entrance mats is constructed from a 100% anti-static polypropylene fabric that dries quickly and will not fade or rot, making it a perfect floor mat for indoor or outdoor applications. The versatile "roll good" design is flexible; great for large entrance area installation and custom cut applications. It is easy to clean the waterhog mats, simply use vacuum, extraction cleaning methods, or hose off and hang to dry.

Our New Waterhog ECO Line is made from 100% recycled PET post-consumer recycled fiber reclaimed from drink bottles and 15% post-consumer recycled tires

70" widths available up to 67' Lengths

Gain valuable LEED certification points

Certified Slip Resistant by the National Floor Safety Institute & ADA compliant

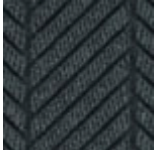
• NOTE: Because these are roll goods, the traditional rubber border is not included in the price for custom sizes but is highly recommended for all NON-RECESSED applications. Please calculate the total linear footage and include the rubber border edging as part of your order. Please call us with any questions or for help calculating this amount.

Item No: EWHPRECO

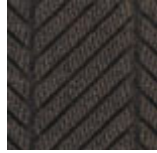
Custom Sizes - Per Sq. Ft. (Approximate)

Size	Qty. 1	Qty. 2-10	Qty. 11-25	Qty. 26+
6' Wide Mats \$/sqft	\$8.25	\$8.08	\$7.96	\$7.84
Rubber Border Edging \$/lin ft	\$5.20	\$4.96	\$4.88	\$4.72

Available Colors



Black Smoke



Chestnut



Gray Ash



Khaki



Regal Red



Indigo



Southern Pine